

# Sealing Elements



**For LineStop  
4" to 56" Nitrile, Viton and Teflon**

## Description

Maximum Working Pressure 70 Bars.

Nitrile, Teflon, Viton or other polymers available.

Supplied ready drilled and machined to size or drilled and unmachined depending upon customers requirements.

Available in size 4" through 56".

Reinforced for high pressure or high temperature applications.

When ordering please state pipe inside diameter, contents and operating pressure.



## Procedure for Storage of propipe Linestop Sealing Elements

Material: Buna-Nitrile

Sealing Elements are to be stored horizontally on a flat surface. Cylindrical spacers may be used to stack the elements vertically providing they are located centrally on the backing section of the Sealing Element.

Sealing Elements are to be stored in a well ventilated dark area.

The normal temperature range for storage is between 10°C to 30°C.

The maximum service temperature is 120°C.

Sealing Elements are not recommended for storage or service with chlorinated solvents, strong oxidising chemicals or fuels, and solvents having a high aromatic content.

The side surfaces of the Sealing Element are not to be subjected to external loading which may cause deformation.

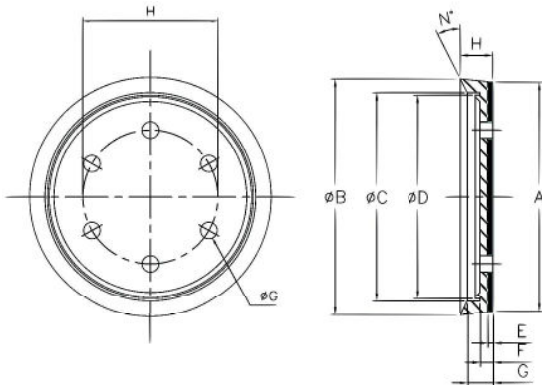
Shelf Life: 2 - 5 years if stored correctly.

Silicone Sealing elements for high temperature



# Sealing Elements

For LineStop  
4" to 56" Nitrile, Viton and Teflon



## SEALING ELEMENTS

Size		MAX 25 BAR			MAX 100 BAR		
Inch	DN	Lbs	Kg	PN	Lbs	Kg	PN
4	100	1	0,5	PSE-04-S6	1	0,5	PSE-04-S7
6	150	2	0,9	PSE-06-S6	2	1,0	PSE-06-S7
8	200	2	0,9	PSE-08-S6	2	1,0	PSE-08-S7
10	250	4	1,8	PSE-10-S6	4	1,9	PSE-10-S7
12	300	5	2,3	PSE-12-S6	5	2,4	PSE-12-S7
14	350	7	3,2	PSE-14-S6	7	3,3	PSE-14-S7
16	400	9	4,1	PSE-16-S6	9	4,3	PSE-16-S7
18	450	12	5,5	PSE-18-S6	13	5,7	PSE-18-S7
20	500	19	8,6	PSE-20-S6	20	9,1	PSE-20-S7
22	550	24	10,9	PSE-22-S6	25	11,5	PSE-22-S7
24	600	37	16,8	PSE-24-S6	39	17,7	PSE-24-S7
26	650	40	18,2	PSE-26-S6	42	19,1	PSE-26-S7
30	750	64	29,1	PSE-30-S6	67	30,5	PSE-30-S7
32	800	69	31,4	PSE-32-S6	72	32,9	PSE-32-S7
34	850	72	32,7	PSE-34-S6	76	34,4	PSE-34-S7
36	900	77	35,0	PSE-36-S6	81	36,8	PSE-36-S7

