



WWW.TORQLITE.COM

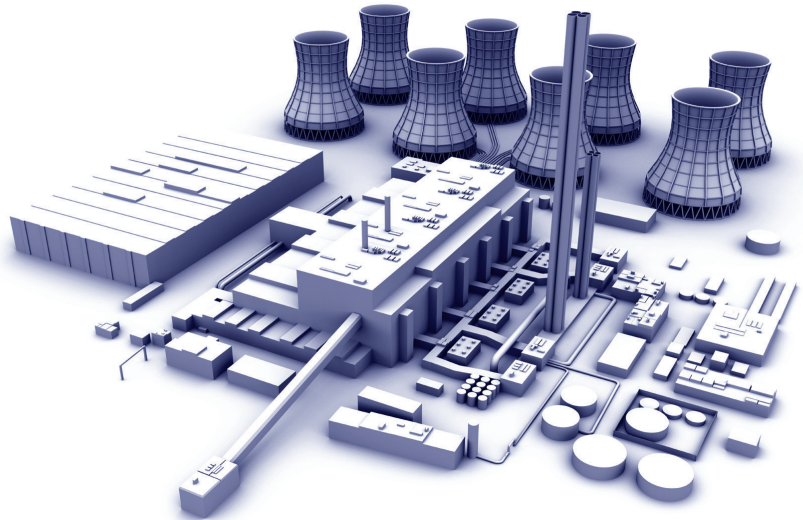
ISO 9001 REGISTERED

8 DUFRESNE LOOP LULING, LA 70070
(985) 785-3075

11050 W LITTLE YORK BLDG. I HOUSTON, TX 77041
(713) 983-7171

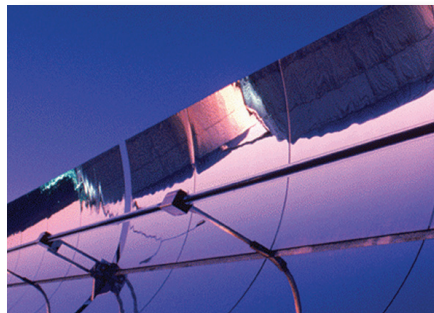
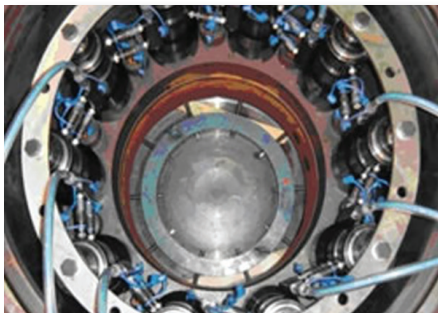
TENSIONERS

WIND INDUSTRY



Torq/Lite carries a complete line of hydraulic stud tensioners for all industries and applications. Included in the tensioner information are specialty tensioners that we carry for the wind industry including two tensioner options for foundation bolts. When Torq/Lite® tensioners are used in conjunction with our light, ergonomic and dependable tensioner pumps and pump accessories you get one of the most economic, accurate and easily portable tensioning systems currently on the market. Also, see our tensioner application sheet to be filled in by you, the customer. If you can provide Torq/Lite with the requested information about your specific tensioning application, we can then supply you with the best option to quickly and safely address your job for the best value.

We look forward to servicing all of your tensioning needs and showing you the Torq/Lite difference.





WWW.TORQLITE.COM

ISO 9001 REGISTERED

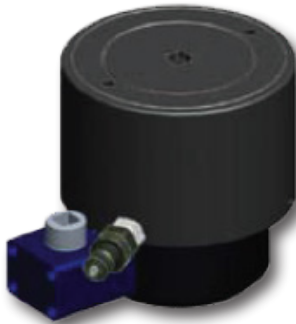
8 DUFRESNE LOOP LULING, LA 70070
(985) 785-3075

11050 W LITTLE YORK BLDG. I HOUSTON, TX 77041
(713) 983-7171

TENSIONERS

WIND INDUSTRY

TL/LTTS - MO42-02-00



60mm hex nut rotator, pressure advance, spring return, single port, 21,750 psi (1500 bar) maximum operating pressure, single-stage design, ratchet-style tensioner engagement, ratchet style nut rotator, positive stop to prevent over stroking, steel construction, minimal outside diameter to fit into close clearance application when blade is installed on the rotor.

MAXIMUM PRESSURE	HYDRAULIC PRESSURE AREA	MAXIMUM LOAD	MAXIMUM STROKE	APPROXIMATE WEIGHT
1500 bar	2,714 mm ²	407,000 N	10 mm	6.0 kg
21,750 psi	4.21 in. ²	91,507 lbf.	.394 in.	13.2 lb.

ECONOMY FOUNDATION TENSIONER

Interchangeable Foundation Stud Tensioner designed for Williams or Dyson wind tower foundation studs. Economy design offers ease of use by utilizing an existing foundation stud hex nut. Includes a common load cell and interchangeable tensioner base. Pressure advance, spring return, single port, 21,750 psi (1500 bar) maximum operating pressure, single-stage design, and ratchet-style nut rotator. Includes a positive stop to prevent over stroking.



MAXIMUM PRESSURE	HYDRAULIC PRESSURE AREA	MAXIMUM LOAD	MAXIMUM STROKE	APPROXIMATE WEIGHT
1500 bar	4,357 mm ²	407,000 N	10 mm	6.0 kg
21,750 psi	6.75 in. ²	147,507 lbf.	.394 in.	13.2 lb.



WWW.TORQLITE.COM

ISO 9001 REGISTERED

8 DUFRESNE LOOP LULING, LA 70070
(985) 785-3075

11050 W LITTLE YORK BLDG. I HOUSTON, TX 77041
(713) 983-7171

TENSIONERS

WIND INDUSTRY



M36 X 4.0 BLADE BOLT INSTALLATION TENSIONER

Interchangeable Foundation Stud Tensioner designed for Williams or Dyson wind tower foundation studs. Economy design offers ease of use by utilizing an existing foundation stud hex nut. Includes a common load cell and interchangeable tensioner base. Pressure advance, spring return, single port, 21,750 psi (1500 bar) maximum operating pressure, single stage design, and ratchet-style nut rotator. Includes a positive stop to prevent over stroking.

MAXIMUM PRESSURE	HYDRAULIC PRESSURE AREA	MAXIMUM LOAD	MAXIMUM STROKE	APPROXIMATE WEIGHT
1500 bar	4,467 mm ²	670,000 N	8 mm	-
21,750 psi	6.92 in. ²	150,000 lbf.	.315 in.	-

M36 X 4.0 GEARBOX INSPECTION TENSIONER

60mm hex nut rotator, pressure advance, spring return, single port, 21,750 psi (1500 bar) maximum operating pressure, single-stage design, ratchet style tensioner engagement, ratchet-style nut rotator, positive stop to prevent over stroking, steel construction, minimal outside diameter to fit into close clearance application when blade is installed on the rotor.



MAXIMUM PRESSURE	HYDRAULIC PRESSURE AREA	MAXIMUM LOAD	MAXIMUM STROKE	APPROXIMATE WEIGHT
1500 bar	-	927,800 N	10 mm	12.0 kg
21,750 psi	-	208,600 lbf.	.394 in.	26.5 lb.



ISO 9001 REGISTERED

8 DUFRESNE LOOP LULING, LA 70070
(985) 785-3075

11050 W LITTLE YORK BLDG. I HOUSTON, TX 77041
(713) 983-7171

WWW.TORQLITE.COM

TENSIONERS

POWER CONSOLES



M42 X 4.0 GEARBOX TENSIONER

60mm hex nut rotator, pressure advance, spring return, single port, 21,750 psi (1500 bar) maximum operating pressure, single-stage design, ratchet-style tensioner engagement, ratchet-style nut rotator, positive stop to prevent over stroking, steel construction, minimal outside diameter to fit into close-clearance application when blade is installed on the rotor.

MAXIMUM PRESSURE	HYDRAULIC PRESSURE AREA	MAXIMUM LOAD	MAXIMUM STROKE	APPROXIMATE WEIGHT
1500 bar	-	927,800 N	10 mm	12.0 kg
21,750 psi	-	208,600 lbf.	.394 in.	26.5 lb.

TL-TP 30000-4

The TLTP 30000-4 is compact and lightweight, good for shipbuilding, civil engineering and heavy industry. There are automatic low and high pressure two-stage pumps, giving very high performance. Pressure gauge and pressure switch are standard accessories, and a 4.5 liter reservoir pumps as standard. Also available with two-liter or seven-liter reservoir type pumps.



Compact and Lightweight - good for shipbuilding, civil engineering, and heavy industry

Automatic low and high pressure two-stage pumps giving very high performance

Pressure Gauge and pressure switch standard accessories

4.5-liter reservoir pumps as standard - also available with 2-liter or 7-liter reservoir pumps

ELECTRIC MOTOR (50/60 HZ) GEARED COMMUNICATOR				HYDRAULIC PUMP				RESERVOIR CAPACITY	USUABLE OIL	WEIGHT (KG)
				MAX. WORKING PRESSURE (MPa)		OUTPUT (LITERS/MIN.)				
INSULATION TYPE	VOLTAGE (PHASE)	RATED OUTPUT	MINUTES @ 100V AC	1ST STAGE	2ND STAGE	1ST STAGE	2ND STAGE			
Class E Open Type	100, 200, 300 (single)	0.45 kW	10	3.0	200	3.0	0.1	2.0	1.8	15
								4.5	4.0	18
								7.0	6.0	21