

# 5000 Series

## Tapping Machines

### Description

Tapping machines are used for making connections to pipelines, tanks, and plant piping without shutdown and are used to make hot taps in preparation for plugging machine application.

Our Models series 5000 are hydraulically operated.

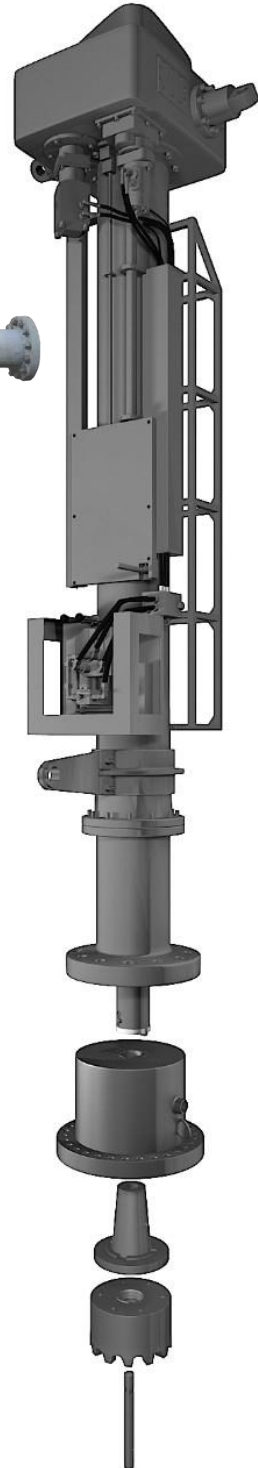


### Specifications

	Drilling Capacity	Stroke
Model 5078	12" – 36"	78"
Model 5108	12" – 42"	108"
Model 5130	12" – 56"	130"

Dimensions	Length 3100mm, Height 760mm, Width 870mm
Weight	990 kg
Mounting	6" Class 600 RTJ Type Flange
Boring Bar	100 mm Diameter Chrome Plated One piece bar with Chevron Gland 400Bar at 100Deg C
Sealed	
Tool Mounting	Industry Standard taper
Tool Retention	Manual Drawbar sealed with Chevron Gland
Max Pressure rating	100Bar (1480psi)
Spindle Speed	25 RPM with Propipe – H3024 Power Pack
Feed Rate	0.12 mm / rev
Depth Measurement	Absolute Linear Scale mounted alongside machine, r measuring rod required. Three presentable pointers
Drive system	Hydraulic Motor driving spindle via HTD Belt ensuri r lubrication and maintenance free spindle drive.
Rapid Boring Bar Travel	by Hydraulic Motor
Hydraulics Pressure	1750psi(118bar)-2000psi (135bar) Max

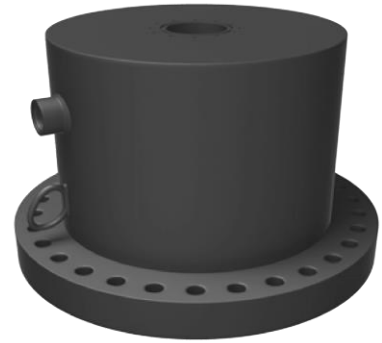


### Features

The machine includes:  
 Lower in crank, measuring rod, Retainer rod pusher, Ring Gasket, Bleeder valve and nipple, Motor adapter, Set of bolts and nuts, Lock-O-Ring bypass gauge

## RAISED FACE (RF) ADAPTOR

Size		Class 150	Class 300	Class 600
inch	mm	Stock Number	Stock Number	Stock Number
12	300	HA-5000-150-12	HA-5000-300-12	HA-5000-600-12
14	350	HA-5000-150-14	HP-5000-300-14	HP-5000-600-14
16	400	HA-5000-150-16	HP-5000-300-16	HP-5000-600-16
18	450	HA-5000-150-18	HP-5000-300-18	HP-5000-600-18
20	500	HA-5000-150-20	HP-5000-300-20	HP-5000-600-20
24	600	HA-5000-150-24	HA-5000-300-24	HA-5000-600-24
28	700	HA-5000-150-28	HP-5000-300-28	HP-5000-600-28
32	800	HA-5000-150-32	HP-5000-300-32	HP-5000-600-32
36	900	HA-5000-150-36	HP-5000-300-36	HP-5000-600-36
40	1000	HA-5000-150-40	HP-5000-300-40	HP-5000-600-40
42	1050	HA-5000-150-42	HP-5000-300-42	HP-5000-600-42



### STANDARD CUTTER

### LINE STOP CUTTER

### PILOT DRILL

STANDARD CUTTER			LINE STOP CUTTER			PILOT DRILL		
Size		Stock Number	Size		Stock Number	Size		Stock Number
inch	mm		inch	mm		inch	mm	
12	292	SC-5000-12	12	300	LC-5000-12	12	300	PD-5000-12
14	324	SC-5000-14	14	332	LC-5000-14	14	350	PD-5000-14
16	373	SC-5000-16	16	383	LC-5000-16	16	400	PD-5000-16
18	383	SC-5000-18	18	432	LC-5000-18	18	450	PD-5000-18
20	432	SC-5000-20	20	483	LC-5000-20	20	500	PD-5000-20
22	483	SC-5000-22	22	533	LC-5000-22	22	550	PD-5000-22
24	533	SC-5000-24	24	584	LC-5000-24	24	600	PD-5000-24
26	584	SC-5000-26	26	635	LC-5000-26	26	650	PD-5000-26
28	635	SC-5000-28	28	686	LC-5000-28	28	700	PD-5000-28
30	686	SC-5000-30	30	737	LC-5000-30	30	750	PD-5000-30
32	737	SC-5000-32	32	787	LC-5000-32	32	800	PD-5000-32
34	787	SC-5000-34	34	838	LC-5000-34	34	850	PD-5000-34
36	838	SC-5000-36	36	889	LC-5000-36	36	900	PD-5000-36
38	889	SC-5000-38	38	937	LC-5000-38	38	950	PD-5000-38
40	937	SC-5000-40	40	987	LC-5000-40	40	1000	PD-5000-40
42	987	SC-5000-42	42	1038	LC-5000-42	42	1050	PD-5000-42



### CUTTER HOLDER

Size		Stock Number
inch	mm	
12 - 42	300 - 1050	CH-5000-1242



### AUTOBLOCK PLUG HOLDER

Size		Stock Number
inch	mm	
12 - 42	300 - 1050	PH-5000-1242



## Sandwich Valves

Size		Class 150	Class 300	Class 600
inch	mm	Stock Number	Stock Number	Stock Number
12	300	SV-12-15	SV-12-30	SV-12-60
14	350	SV-14-15	SV-14-30	SV-14-60
16	400	SV-16-15	SV-16-30	SV-16-60
18	450	SV-18-15	SV-18-30	SV-18-60
20	500	SV-20-15	SV-20-30	SV-20-60
22	550	SV-22-15	SV-22-30	SV-22-60
24	600	SV-24-15	SV-24-30	SV-24-60
26	650	SV-26-15	SV-26-30	SV-26-60
28	700	SV-28-15	SV-28-30	SV-28-60
30	750	SV-30-15	SV-30-30	SV-30-60
32	800	SV-32-15	SV-32-30	SV-32-60
34	850	SV-34-15	SV-34-30	SV-34-60
36	900	SV-36-15	SV-36-30	SV-36-60
38	950	SV-38-15	SV-38-30	SV-38-60
40	1000	SV-40-15	SV-40-30	SV-40-60
42	1050	SV-42-15	SV-42-30	SV-42-60



Propipe USA: Enerteq Solutions  
Houston, TX 77092  
www.enerteqsolutions.com



Propipe HQ: Hermanos Gascon, 14  
Madrid, Spain  
www.propipe.es

# Hydraulic Pack Power

Specially designed hydraulic power pack has air cooled diesel engine and additional take off for ancillary equipment.

## HYDRAULIC POWER PACK

NAME	HP	STOCK NUMBER
POWER PACK	30 HP	PPP-5000-30
POWER PACK	15 HP	PPP-3000-15



Hydraulic Power Pack 30 HP Diesel