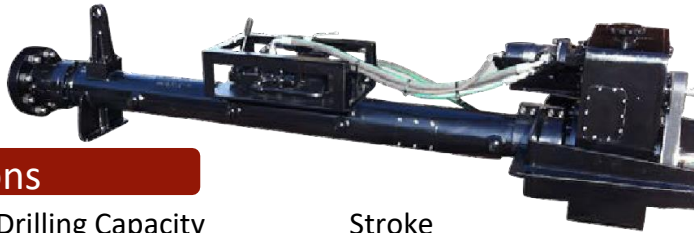


3000 Series Tapping Machines

Description

Tapping machines are used for making connections to pipelines, tanks, and plant piping without shutdown and are used to make hot taps in preparation for plugging machine application.

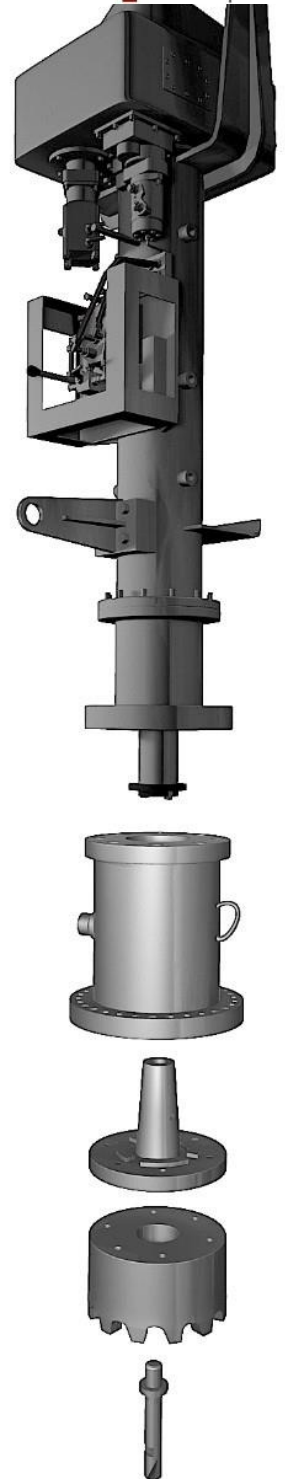
Our Models series 3000 can be either air or hydraulically used.



Specifications

	Drilling Capacity	Stroke
Model 3048	3" – 12"	48"
Model 3066	3" – 14"	66"
Model 3070	3" – 20"	70"

Dimensions	Length 2100mm, Width 500mm, Height 536mm	
Weight	337kg	
Mounting	4" Class 600 RTJ Type Flange	
Boring Bar	Chrome Plated One piece bar-	
Sealed	with Chevron Gland 400Bar at 100Deg C	
Tool Mounting	Industry Standard taper	
Tool Retention	Manual Drawbar	
Max Pressure rating	100Bar (1480psi)	
Spindle Speed	40RPM with Propipe – H1515 Power Pack	
Feed Rate	0.07mm / rev	
Depth Measurement	by measuring rod	
Drive system	Hydraulic Motor, lubrication free belt drive	
Hydraulics Pressure	1750psi(118 bar)-2000psi(135bar)	



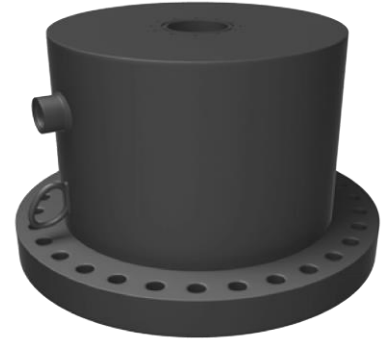
Features

The machine includes:

Lower in crank, measuring rod, Retainer rod pusher, Ring Gasket, Bleeder valve and nipple, Motor adapter, Set of bolts and nuts, Lock-O-Ring bypass gauge

RAISED FACE (RF) ADAPTOR

Size		Class 150	Class 300	Class 600
inch	mm	Stock Number	Stock Number	Stock Number
4	100	HA-3000-150-04	HA-3000-300-04	HA-3000-600-04
6	150	HA-3000-150-06	HA-3000-300-06	HA-3000-600-06
8	200	HA-3000-150-08	HA-3000-300-08	HA-3000-600-08
10	250	HA-3000-150-10	HA-3000-300-10	HA-3000-600-10
12	300	HA-3000-150-12	HA-3000-300-12	HA-3000-600-12
14	350	HA-3000-150-14	HP-3000-300-14	HP-3000-600-14
16	400	HA-3000-150-16	HP-3000-300-16	HP-3000-600-16
18	450	HA-3000-150-18	HP-3000-300-18	HP-3000-600-18
20	500	HA-3000-150-20	HP-3000-300-20	HP-3000-600-20



STANDARD CUTTER

Size		Stock Number
inch	mm	Stock Number
4	87.3	SC-3000-04
6	138.9	SC-3000-06
8	185.8	SC-3000-08
10	241.3	SC-3000-10
12	292.1	SC-3000-12
14	323.9	SC-3000-14
16	373.1	SC-3000-16
18	383.0	SC-3000-18
20	432.0	SC-3000-20



LINESTOP CUTTER

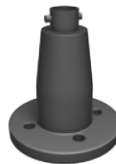
Size		Stock Number
inch	mm	Stock Number
4	100.0	LC-3000-04
6	150.8	LC-3000-06
8	200.0	LC-3000-08
10	250.8	LC-3000-10
12	300.1	LC-3000-12
14	331.8	LC-3000-14
16	382.6	LC-3000-16
18	432.0	LC-3000-18
20	483.0	LC-3000-20

PILOT DRILL

inch	mm	Stock Number
4	100	PD-3000-04
6	150	PD-3000-06
8	200	PD-3000-08
10	250	PD-3000-10
12	300	PD-3000-12
14	350	PD-3000-14
16	400	PD-3000-16
18	450	PD-3000-18
20	500	PD-3000-20

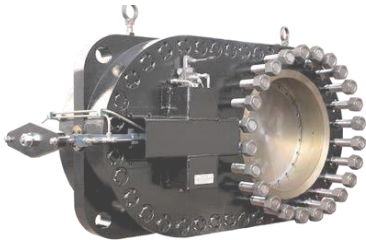
CUTTER HOLDER

Size		Stock Number
inch	mm	Stock Number
4	100	CH-3000-04
6 - 20	150 - 500	CH-3000-06



AUTOBLOCK PLUG HOLDER

Size		Stock Number
inch	mm	Stock Number
4 - 20	100 - 400	PH-3000-0420



Sandwich Valves

Size		Class 150	Class 300	Class 600
inch	mm	Stock Number	Stock Number	Stock Number
4	100	SV-04-15	SV-04-30	SV-04-60
6	150	SV-06-15	SV-06-30	SV-06-60
8	200	SV-08-15	SV-08-30	SV-08-60
10	250	SV-10-15	SV-10-30	SV-10-60
12	300	SV-12-15	SV-12-30	SV-12-60
14	350	SV-14-15	SV-14-30	SV-14-60
16	400	SV-16-15	SV-16-30	SV-16-60
18	450	SV-18-15	SV-18-30	SV-18-60
20	500	SV-20-15	SV-20-30	SV-20-60



Propipe USA: EnerTEQ Solutions
Houston, TX 77092
www.enerteqsolutions.com

propipe

Propipe HQ: Hermanos Gascon, 14
Madrid, Spain
www.propipe.es