

propipe

- Sandwich Valves
- For Hottap & LineStop
- 4" to 56" 150#, 300# & 600#

Slim Valves

Are known also by Sandwich valves (T.D. Williamson) are used to control the hottap and LineStop operations. They are gate valve type and have specially reduced face to face distance in order to make easier the Hottap & LineStop Intervention.

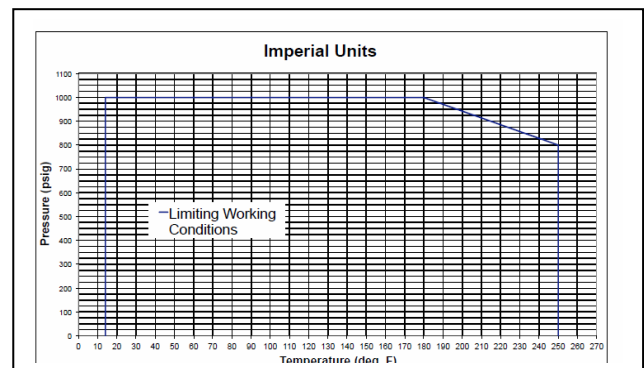
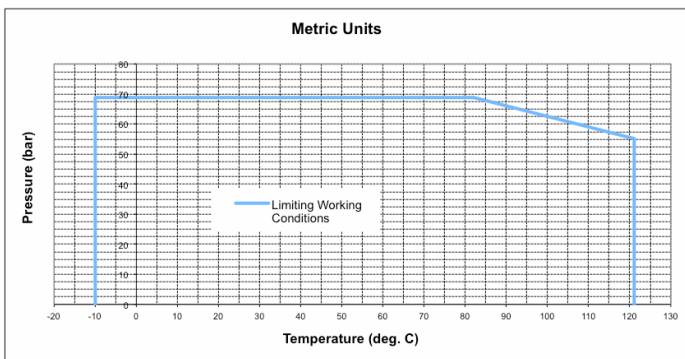
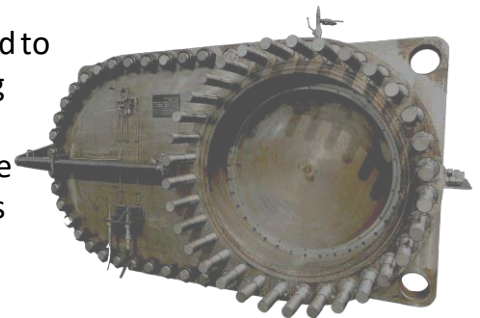
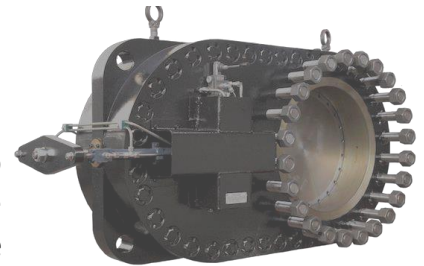
Propipe manufactures a wide range of dimensions, class and material of Slim Valves. We cover 150# to 900#.

MAXIMUM WORKING LIMITS

The maximum working limits of the valve are defined by two points: a maximum working pressure at a specified temperature and a maximum working temperature at a specified (lower) pressure. It is acceptable to operate the valve at any pressure up to a limit defined by a straight line drawn between the above limiting points on a pressure temperature diagram. The safe working limits for pressure and temperature are illustrated graphically in figures 2 and 3.

It is the end user's responsibility to ensure that the valve is not attached to a system whose operating conditions exceed the Maximum Working Pressure and the Maximum Working Temperature specified above.

The valve has not over pressure protection system of its own, so the setting of the safety / relief valve(s) protecting the line to which it is attached must not exceed the working pressure at the appropriate maximum working temperature.



Propipe USA: Enerteq Solutions
Houston, TX 77092
www.enerteqsolutions.com



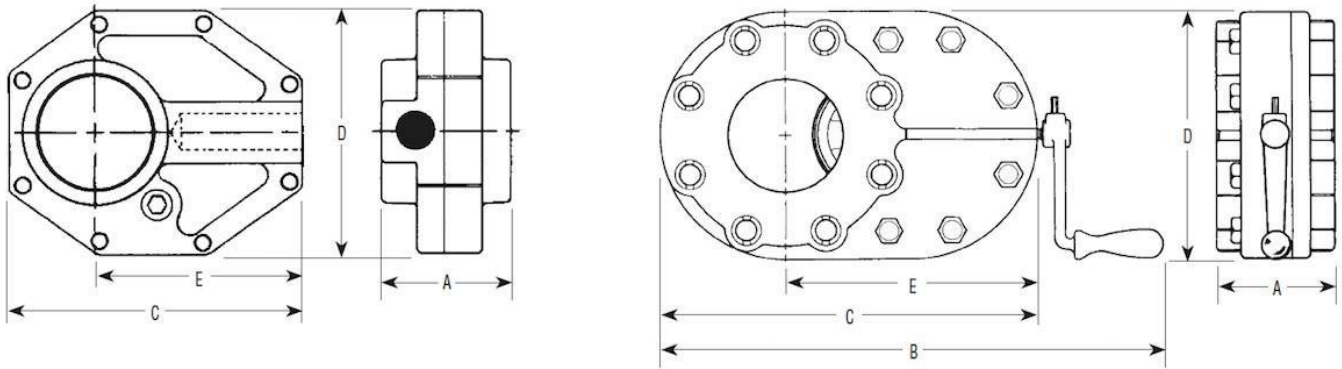
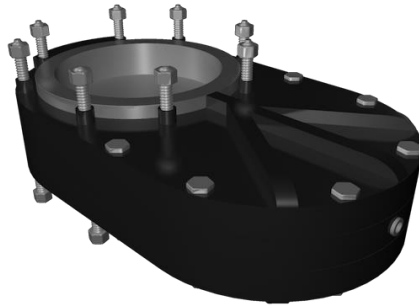
Propipe HQ: Hermanos Gascon, 14
Madrid, Spain
www.propipe.es

propipe

■ Sandwich Valves

■ For Hottap & LineStop

■ 4" to 56" 150#, 300# & 600#



Size		A		B		C		D		E		Part Number
Inch	DN	Inch	mm	Inch	mm	Inch	mm	Inch	mm	Inch	mm	Class 150#
2	50	3-3/16	81	-	-	6-5/8	168	5-5/8	142	4-1/4	108	PSV-02-15
3	80	4-1/8	104	-	-	10-1/8	257	7-3/4	196	6-3/8	162	PSV-03-15
4	100	4-1/4	108	18	457	13-1/2	343	9	229	9	229	PSV-04-15
6	150	5-1/4	133	22-9/16	573	18-1/16	459	11	279	12-9/16	319	PSV-06-15
8	200	5-1/2	140	27	686	22-1/4	565	13-1/2	343	15-11/16	398	PSV-08-15
12	400	6	152	37-5/8	956	32	813	19	483	22-1/2	572	PSV-12-15

Information indicated in the table could be changed according to availability of material or manufacturing processes.



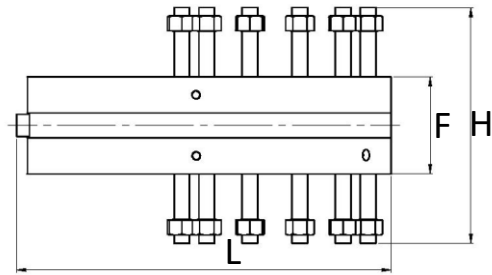
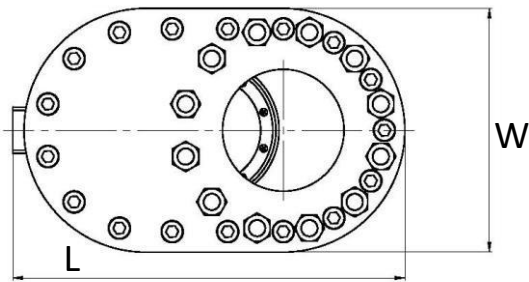
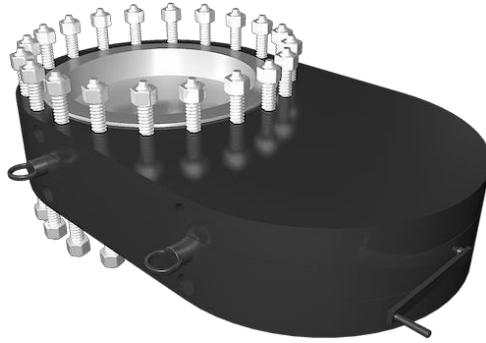
Propipe USA: Enerateq Solutions
Houston, TX 77092
www.enerateqsolutions.com



Propipe HQ: Hermanos Gascon, 14
Madrid, Spain
www.propipe.es

propipe

- Sandwich Valves
- For Hottap & LineStop
- 4" to 56" 150#, 300# & 600#



Slim Valves 300#

Size		Approx. Weight		W-Width		L - Open		L - Closed		H-Face to Face		F-Overall		Part Number
Inch	DN	Lbs	Kg	Inch	mm	Inch	mm	Inch	mm	Inch	mm	Inch	mm	Class 600#
4	100	153	69	10	254	20-5/8	524	20-5/8	524	4-1/4	108	9-1/4	234	PSV-04-30
6	150	260	118	12-1/2	318	25	635	25	635	5-1/2	140	10-1/4	260	PSV-06-30
8	200	415	188	15	381	29-1/2	749	29-1/2	749	5-7/8	149	11-1/8	283	PSV-08-30
10	250	750	340	17-1/2	445	34-3/8	873	34-3/8	873	7	178	13	330	PSV-10-30
12	300	1150	522	20-1/2	521	39-5/8	1006	39-5/8	1006	7-5/8	194	14-1/4	362	PSV-12-30
14	350	1600	726	23	584	38-1/2	978	38-1/2	978	7-3/4	197	16	406	PSV-14-30
16	400	1957	855	27	780	43-5/8	1090	43-5/8	1090	9-1/4	223	17-1/4	435	PSV-16-30
18	450	2320	1050	28	911	47-1/2	1207	47-1/2	1207	10-1/8	251	18-3/4	476	PSV-18-30
20	500	3200	1452	30-1/2	775	56-3/4	1441	56-3/4	1441	10-5/8	270	19-1/8	486	PSV-20-30
22	550	4800	2177	30-1/2	775	52-1/2	1334	52-1/2	1334	10-5/8	270	20-1/8	511	PSV-22-30
24	600	5300	2404	36	914	96	2438	72-3/8	1838	12-3/4	324	22-3/4	578	PSV-24-30
26	650	6900	3130	38-1/4	972	103-3/4	2635	77	1956	14-3/4	375	25-1/4	641	PSV-26-30
30	750	10000	4536	43	1092	118-7/8	3019	87-7/8	2232	16-7/16	418	28-1/4	718	PSV-30-30
36	900	15500	2031	50	1270	138-3/4	3524	102	2591	9-9/16	497	32-13/16	833	PSV-36-30

Information indicated in the table could be changed according to availability of material or manufacturing processes.



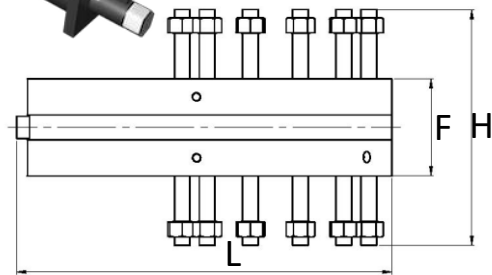
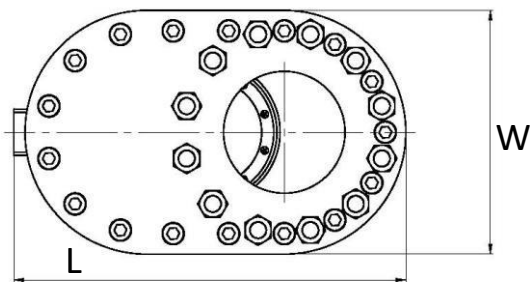
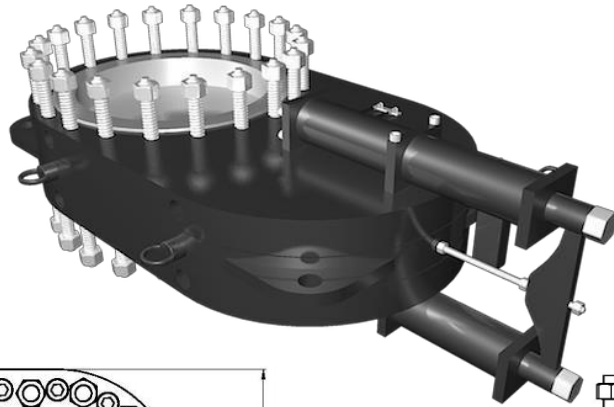
Propipe USA: Enerateq Solutions
Houston, TX 77092
www.enerateqsolutions.com



Propipe HQ: Hermanos Gascon, 14
Madrid, Spain
www.propipe.es

propipe

- Sandwich Valves
- For Hottap & LineStop
- 4" to 56" 150#, 300# & 600#



Slim Valves 600#

Size		Approx. Weight		W-Width		L - Open		L - Closed		H-Face to Face		F - Overall		Part Number
Inch	DN	Lbs	Kg	Inch	mm	Inch	mm	Inch	mm	Inch	mm	Inch	mm	Class 600#
4	100	177	80	10-3/4	273	21-3/8	543	21-3/8	543	5	127	10-3/4	273	PSV-04-60
6	150	450	204	14	356	26-1/8	664	26-1/8	664	6-1/2	165	13-1/2	343	PSV-06-60
8	200	575	261	16-1/2	419	31-3/8	797	31-3/8	797	7-1/8	181	14-7/8	378	PSV-08-60
10	250	950	431	20	509	37-1/4	946	37-1/4	946	8	203	16-1/2	419	PSV-10-60
12	300	1500	680	22	560	41	1041	41	1041	9-15/16	252	18-1/2	470	PSV-12-60
14	350	1900	862	23-3/4	604	43-7/8	1114	43-7/8	1114	10-5/8	270	19-5/8	498	PSV-14-60
16	400	3000	1361	27	686	48-5/8	1235	48-5/8	1235	11-3/4	298	21-3/4	552	PSV-16-60
18	450	3750	1700	29-1/4	742	54	1372	54	1372	13-5/16	338	24	610	PSV-18-60
20	500	4700	2132	32	814	57-5/8	1464	57-5/8	1464	13-3/4	349	24-7/8	632	PSV-20-60
22	550	6200	2812	34-1/4	870	62-1/8	1578	62-1/8	1578	13-3/4	349	25-7/8	651	PSV-22-60
24	600	6300	2858	37	940	102-1/8	2594	102-1/8	1934	13-7/8	352	26-5/8	676	PSV-24-60
26	650	8500	3856	40	1015	105	2667	105	1988	16-1/4	413	30	762	PSV-26-60
28	700	10000	4536	42-1/2	1080	112-1/4	2851	112-1/4	2121	17-1/2	445	31-3/4	806	PSV-28-60
30	750	11780	5343	44-1/2	1131	119-1/2	3035	119-1/2	2251	17-3/4	451	33	838	PSV-30-60
34	850	15500	7031	49	1245	134-3/8	3413	134-3/8	2499	19-7/8	505	35-3/8	898	PSV-34-60
36	900	23000	10433	51-3/4	1315	140-3/4	3575	140-3/4	2642	25-1/2	648	41-3/4	1061	PSV-36-60
40	1000	27250	10550	57-1/8	1450	153	3886	153	2896	22-5/8	575	41-5/8	1058	PSV-40-60
42	1050	23700	10750	58-5/8	1493	155	3937	155	2896	22-1/2	572	41-1/2	1059	PSV-42-60
48	1200	32500	14742	64	1627	175-3/4	4464	175-3/4	3226	22-9/16	573	45	1145	PSV-48-60

Information indicated in the table could be changed according to availability of material or manufacturing processes.



Propipe USA: Enerteq Solutions
Houston, TX 77092
www.enerteqsolutions.com



Propipe HQ: Hermanos Gascon, 14
Madrid, Spain
www.propipe.es