

856WD CLAMSHELL LATHE

MACTECH PORTABLE MACHINING SOLUTIONS

Features

- Sever or simultaneous Sever/Bevel 44 to 56 inch diameter pipe.
- Cold cutting in hazardous environments.
- Exceptionally rigid, split-frame for precise on-site machining.
- Lightweight, low clearance design for easy handling in tight working spaces.
- Tool Holder accepts standard 3/4 or 1 inch tool bits.
- Air Caddy (air filter and oiler) included with air drive systems.
- Custom setups and drives available for your application.



Mactech 856WD Clamshell Lathe

Application Range

44 to 56 inch (1118 to 1422 mm) diameter pipe

Feed

Feed Mechanism: 4 point starwheel with 3-pin tripper feed.

Feed Rate: .002, .004 or .006 inches per revolution (0.05, 0.11 or .16 mm)

Drives

Air Drive

Air supply requirement: 100 cfm @ 100 psi (2.8 m³/min @ 6.9 bar)

Hydraulic Drive

HPU requirement: 10-15 gpm @ 1000 psi (38-57 lpm @ 69 bar) continuous pressure

Hydraulic motor includes hose whips and quick-disconnects

Weights (includes tool blocks and motor)

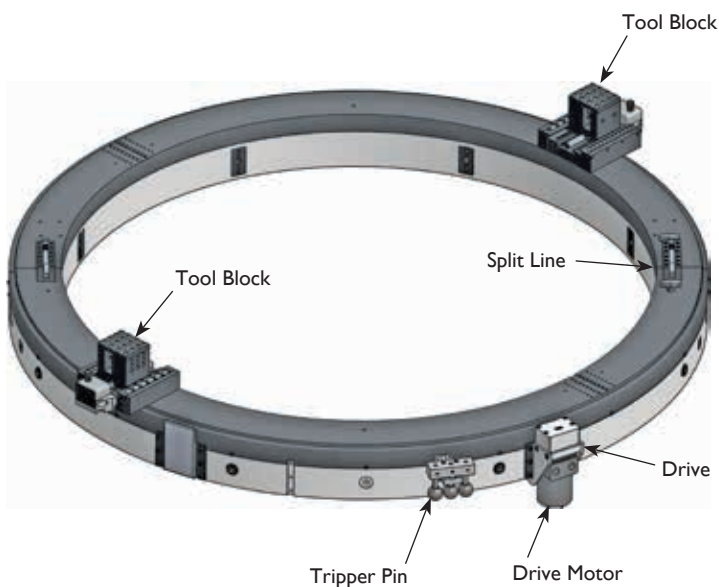
Operating Weights

856WD Air Drive: 918 lbs. (416 kg)

856WD Hydraulic Drive: 930 lbs. (422 kg)

Options

- Full line of tool bits
- Right angle and reversible drives
- Single Point machining attachment
- Axial Feed machining attachment
- Counterbore/Facing attachment
- Hydraulic Power Unit



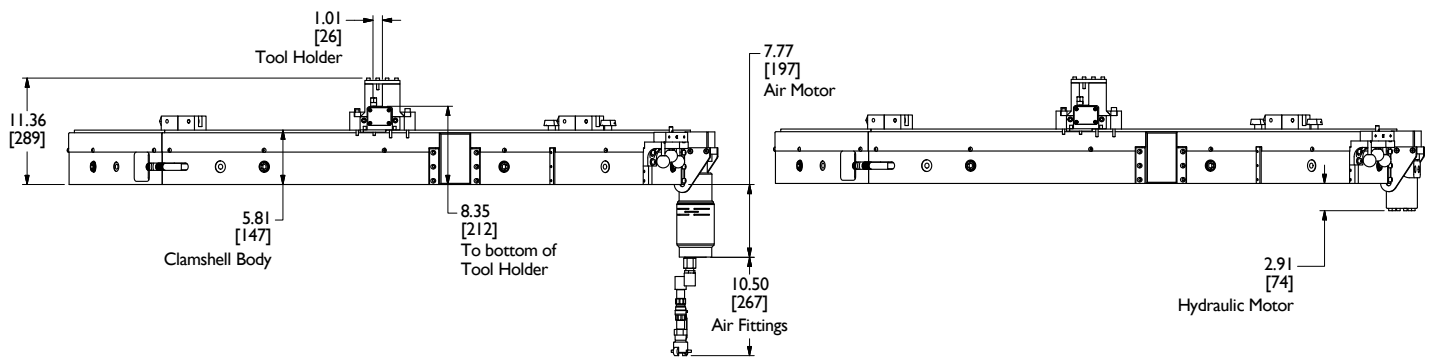
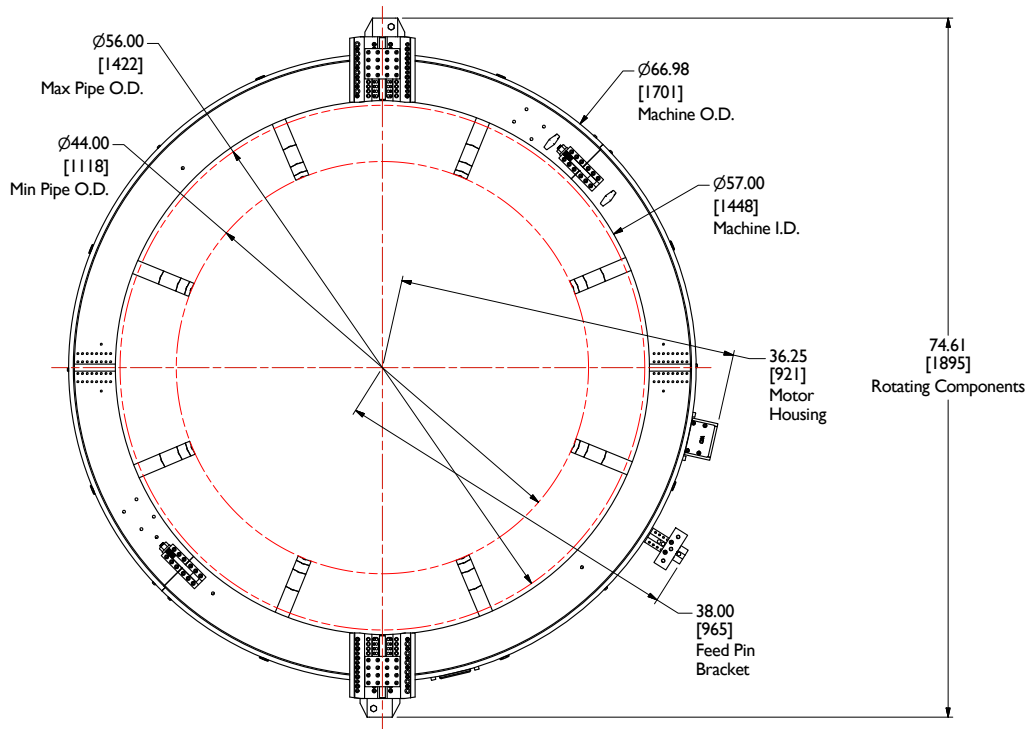
856WD Clamshell Lathe Components

MACTECH
ON-SITE MACHINING SOLUTIONS

Mactech, Inc. • 4079 Pepin Ave. • Red Wing, MN 55066
PH: 651-388-7117 • TOLL FREE: 800-328-1488 • FAX: 651-388-0337
www.mactechonsite.com

856WD CLAMSHELL LATHE

MACTECH PORTABLE MACHINING SOLUTIONS



Mactech, Inc. • 4079 Pepin Ave. • Red Wing, MN 55066
 PH: 651-388-7117 • TOLL FREE: 800-328-1488 • FAX: 651-388-0337
www.mactechonsite.com