



"innovation in its most functional form"

PRODUCT DATA SHEET

SG15TE

SECURE-GRIP HYDRAULIC FLANGE SPREADER

SPREADING FORCE:
10,000 psi (700 bar) = 15 T (150 kN) per tool
It is recommended that tools are used in pairs giving
2 x 15 = 30 T (300 kN)

SPREADING DISTANCE = 0-100mm (0-3.94")
TOOL WEIGHT = 26 kg (57.3 lbs)

KIT COMPONENTS

- 1 x SG15TE Tool c/w Hydraulic Cylinder
 - 1 x 10,000 psi (700 bar) HP550S Sealed Hand Pump with Gauge
 - 1 x 10,000 psi (700 bar) Hydraulic Hose, 2m (78.75")
 - 1 x 300mm (12") Vernier Calliper
 - 1 x 1/2" Square drive flexible handle
 - 1 x 36mm (1/2") Drive Socket
 - 1 x Safety Block
 - 2 x M48 (1 7/8") Collets
 - 2 x M52 (2") Collets
 - 2 x M56 (2 1/4") Collets
 - 1 x Instruction Manual
 - 1 x Carry Case with protective foam inserts
- Product Code: SG15TESTD

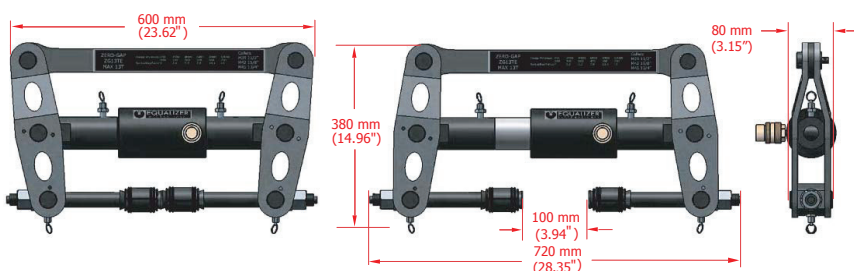


WEIGHTS AND DIMENSIONS

Tool Weight	= 26 kg (57.3 lbs)	Carry Case Dimensions:
Case Weight	= 9 kg (19.8 lbs)	890 x 570 x 165mm (35.04" x 22.44" x 6.50")
Gross Weight	= 45 kg (99.2 lbs)	

TOOL DIMENSIONS - CLOSED

TOOL DIMENSIONS - OPEN



info@equalizerinternational.com
www.equalizerinternational.com

SG15TE

SECURE-GRIP HYDRAULIC FLANGE SPREADER



"innovation in its most functional form"

RANGE OF APPLICATION

The SG15TE is usable on all standard flanges that have been specified to accept the following bolt sizes:

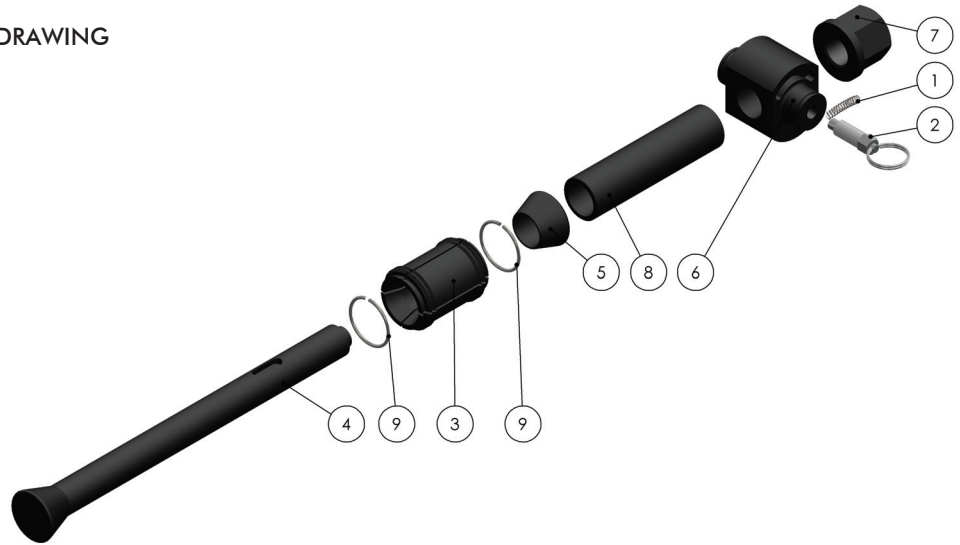
M48, M52, M56, 1 7/8", 2", 2 1/4"

This includes ANSI, DIN, SPO, ASME, API and BS flanges.

For a detailed range of application please request the Secure-Grip Hydraulic Operator Instruction Manual.

COLLET HEAD PARTS LIST AND EXPLODED DRAWING

ITEM	DESCRIPTION	PART NO.	QUANTITY
01	CENTERING SPRING	402201-01	01 each
02	M12 PLUNGER	641001-01	01 each
03	M48 COLLET	650101-01	01 each
	M52 COLLET	650201-01	01 each
	M56 COLLET	650301-01	01 each
04	COLLET HOLDER	650401-01	01 each
05	DRIVE CONE	650501-01	01 each
06	COLLET UNION	650601-01	01 each
07	COLLET NUT M24	650901-01	01 each
08	DRIVE TUBE	651601-01	01 each
09	M48 SPRING RING	652201-01	01 each
	M52 SPRING RING	652401-01	01 each
	M56 SPRING RING	652601-01	01 each



SG15TE PARTS LIST AND EXPLODED DRAWING

ITEM	DESCRIPTION	PART NO.	QUANTITY
01	READ INSTR. STICKER	070001-01	01 each
02	EQUALIZER LOGO	070045-01	02 each
03	CANTILEVER STICKER	070131-01	01 each
04	RIVET PIN	020706-01	02 each
05	SPLIT RING	403102-01	01 each
06	SPIROL REATINING RING	641301-01	10 each
07	PULL PIN	641701-01	01 each
08	M8 BALL PLUNGER	641801-01	01 each
09	CANTILEVER PIN	643201-01	01 each
10	ACTUATOR ASSEMBLY	644001-01	01 each
11	LEG W/O PIN	651101-01	02 each
12	LEG W PIN	651101-02	02 each
13	ACTUATOR PIN	651401-01	02 each
14	CANTILEVER	651501-01	01 each
15	ACTUATOR UNION	651901-01	02 each
16	SERIAL PLATE	653201-01	01 each
17	PULL PIN M10	900502-01	02 each
18	COLLET HOLDER ASS.		02 each

